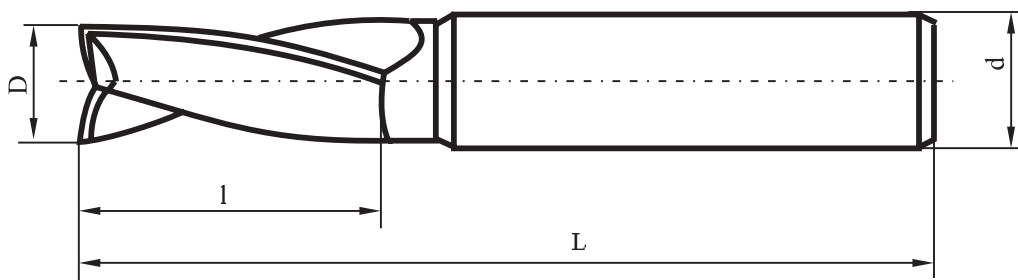
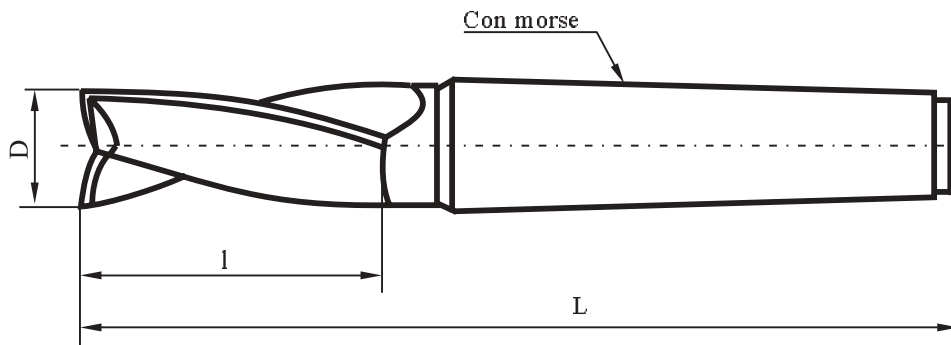


STAS 1680-79



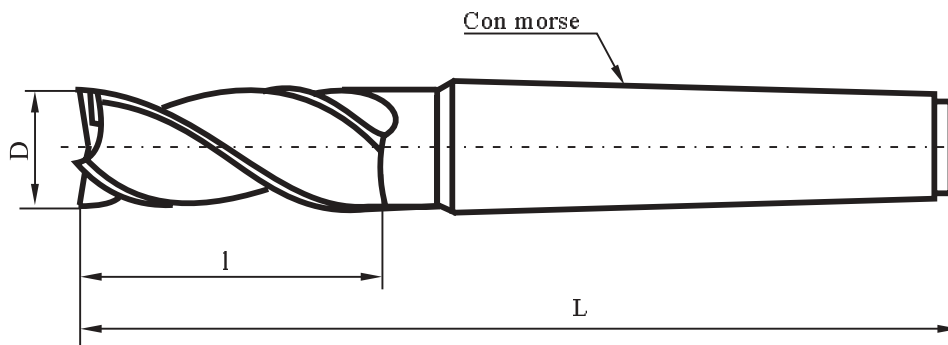
D mm	L mm	d mm	l mm	Pret ( )
1	2	3	4	5
6	57	6	13	
7	60	8	16	
8	63	8	19	
9	69	10	19	
10	72	10	22	
11	79	12	22	
12	83	12	26	
14	83	12	26	
16	92	16	32	
18	92	16	32	
20	106	20	38	

STAS 1681-85



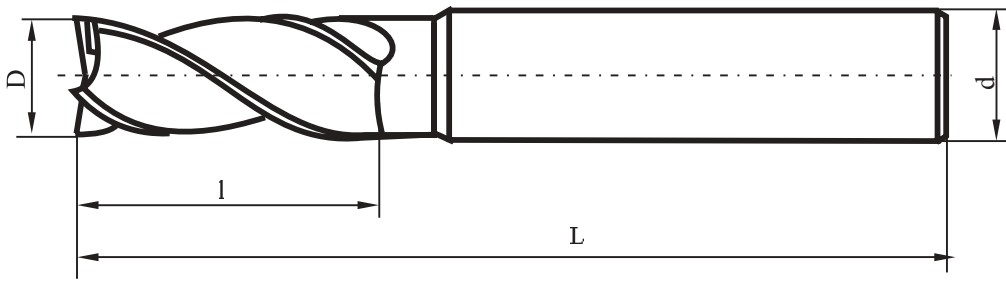
D mm	L mm	l mm	CM mm	Pret ( )
1	2	3	4	5
6	83	13	1	
7	86	16	1	
8	89	19	1	
9	89	19	1	
10	92	22	1	
11	92	22	1	
12	96	26	1	
14	96	26	1	
16	117	32	2	
18	117	32	2	
20	123	38	2	
22	123	38	2	
25	147	45	3	
28	147	45	3	
32	155	53	3	
36	155	53	3	
40	188	63	4	
45	188	63	4	
50	200	75	4	
56	200	75	4	
63	248	90	5	

### STAS 1683-80



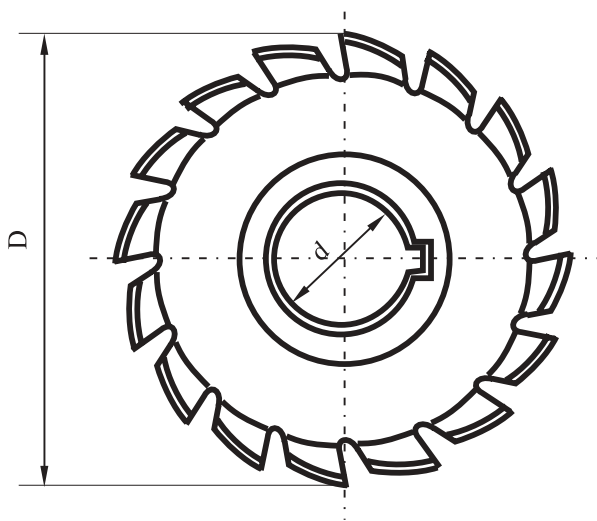
D mm	CM mm	Varianta normala		Varianta lunga		Nr. de dinti Z			Pret ( )
		L mm	l mm	L mm	l mm	N	M	D	
1	2	3	4	5	6	7	8	9	10
6	1	83	13	94	24	4	3	4	
7	1	86	16	100	30	4	3	4	
8	1	89	19	108	38	4	3	5	
9	1	89	19	108	38	4	3	5	
10	1	92	22	115	45	4	3	5	
11	1	92	22	115	45	4	3	5	
12	1	96	26	123	53	4	3	6	
12	2	111	26	138	53	4	3	6	
14	1	96	26	123	53	4	3	6	
14	2	111	26	138	53	4	3	6	
16	2	117	32	148	63	4	3	6	
18	2	117	32	148	63	4	3	6	
20	2	123	38	160	75	4	3	6	
20	3	140	38	177	75	4	3	6	
22	2	123	38	160	75	5	3	8	
22	3	140	38	177	75	5	3	8	
25	3	147	45	192	90	5	3	8	
28	3	147	45	192	90	5	3	10	
32	3	155	53	208	106	6	4	10	
32	4	178	53	231	106	6	4	10	
36	3	155	53	208	106	6	4	10	
36	4	178	53	231	106	6	4	10	
40	4	188	63	250	125	6	4	10	
40	5	221	63	283	125	6	4	10	
45	4	188	63	250	125	6	5	12	
45	5	221	63	283	125	6	5	12	
50	4	200	75	275	150	8	5	12	
50	5	233	75	308	150	8	5	12	
56	4	200	75	275	150	8	5	12	
56	5	233	75	308	150	8	5	12	
63	5	248	90	338	180	8	6	14	

STAS 1684-80



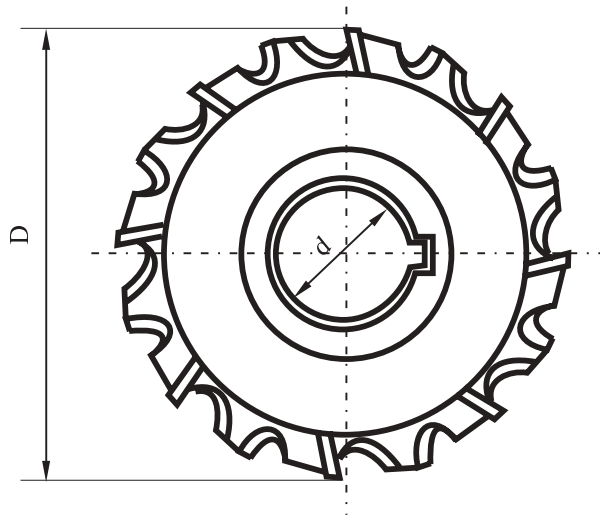
D mm	d mm	Varianta normala		Varianta lunga		Nr. de dinti Z			Pret ( )
		L mm	l mm	L mm	l mm	N	M	D	
1	2	3	4	5	6	7	8	9	10
6	6	57	13	68	24	4	3	4	
7	8	60	16	74	30	4	3	4	
8	8	63	19	82	38	4	3	5	
9	10	69	19	88	38	4	3	5	
10	10	72	22	95	45	4	3	5	
11	12	79	22	102	45	4	3	5	
12	12	83	26	110	53	4	3	5	
14	12	83	26	110	53	4	3	6	
16	16	92	32	123	63	4	3	6	
18	16	92	32	123	63	4	3	6	
20	20	104	38	141	75	4	3	6	

STAS 2214-75



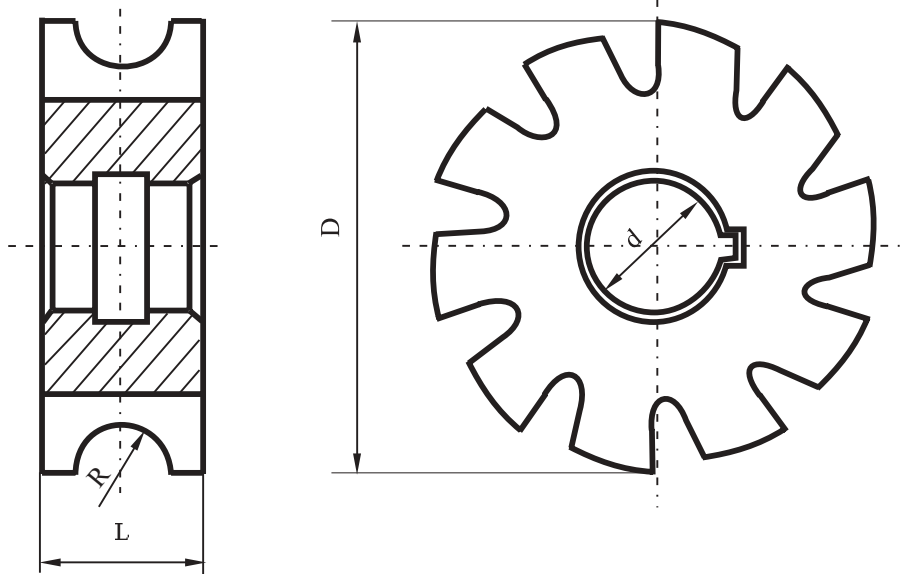
D mm	L mm	d mm	Nr. de dinti z	Pret ( )
1	2	3	4	5
50	4; 5; 6; 7; 8; 10;	16	10	
63	4; 5; 6; 7; 8; 9; 10; 12; 14;	22	10	
80	5; 6; 7; 8; 10; 12; 14; 16; 18;	27	12	
100	6; 7; 8; 10; 12; 14; 16; 18; 20; 22; 25;	32	14	
125	8; 10; 12; 14; 16; 18; 20; 22; 25;	32	16	
160	10; 12; 14; 16; 18; 20; 22; 25; 28; 32;	40	18	
200	12; 14; 16; 18; 20; 22; 25; 28; 32; 36; 40;	40	20	
250	14; 16; 18; 20; 22; 25; 28; 32; 36; 40; 45;	50	22	

STAS 2215/1-86



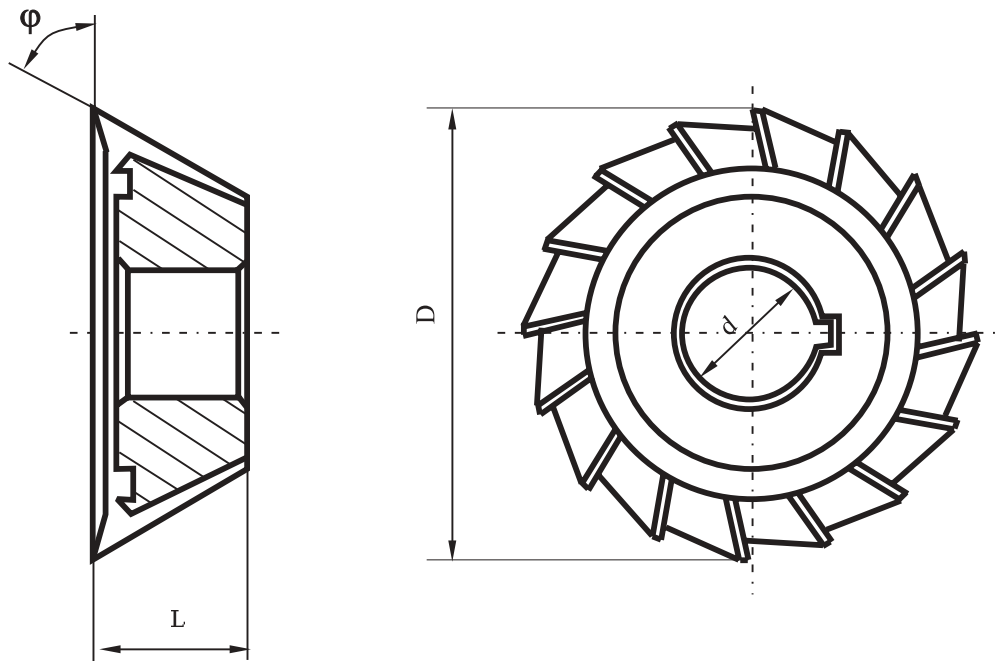
D mm	L mm	d mm	Nr. de dinti z Tip N	Pret ( )
1	2	3	4	5
50	4; 5; 6; 8; 10;	16	10	
63	4; 5; 6; 8; 10; 12; 14; 16;	22	10	
80	5; 6; 8; 10; 12; 14; 16; 20;	27	12	
100	5; 6; 8; 10; 12; 14; 16; 18; 20;25;	32	14	
125	6; 8; 10; 12; 14; 16; 18; 20; 22; 25;28;	32	16	
160	8; 10; 12; 14; 16; 18; 20; 22; 25; 28;32;	40	18	
200	12; 14; 16; 18; 20; 22; 25; 28; 32; 36; 40;	40	20	
250	14; 16; 18; 20; 22; 25; 28; 32; 36; 40; 45;	50	22	

STAS 3540-80



R mm	D mm	L mm	d mm	Nr. de dinti z	Pret ( )
1	2	3	4	5	6
1	50	6	16	14	
1.25	50	6	16	14	
1.6	50	8	16	14	
2	5063	9	16	14	
2.5	63	10	22	12	
3	63	12	22	12	
4	63	16	22	12	
5	63	20	22	12	
6	80	24	27	10	
8	80	32	27	10	
10	100	36	32	10	
12	100	40	32	10	
16	125	50	32	10	
20	125	60	32	10	

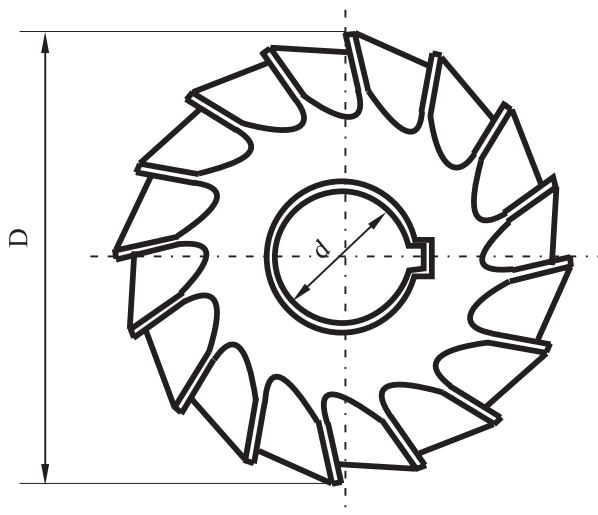
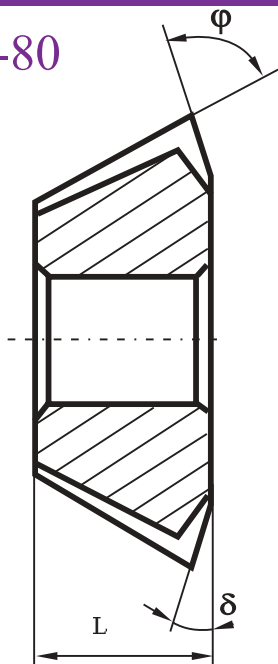
STAS 3541-80



D mm	L mm	$\varphi^{\circ}$	d mm	Nr. de dinti z	Pret ( )
1	2	3	4	5	6
40	10	45; 60	13	12	
40	12	75; 90	13	12	
50	12	55; 60; 65; 70	16	14	
50	16	75; 80; 85; 90	16	14	
63	12	45; 50	22	16	
63	16	55; 60; 70	22	16	
63	20	75; 80; 85; 90	22	16	
80	25	45; 50; 60	22	18	
80	30	65; 70; 75; 80; 85; 90	22	18	

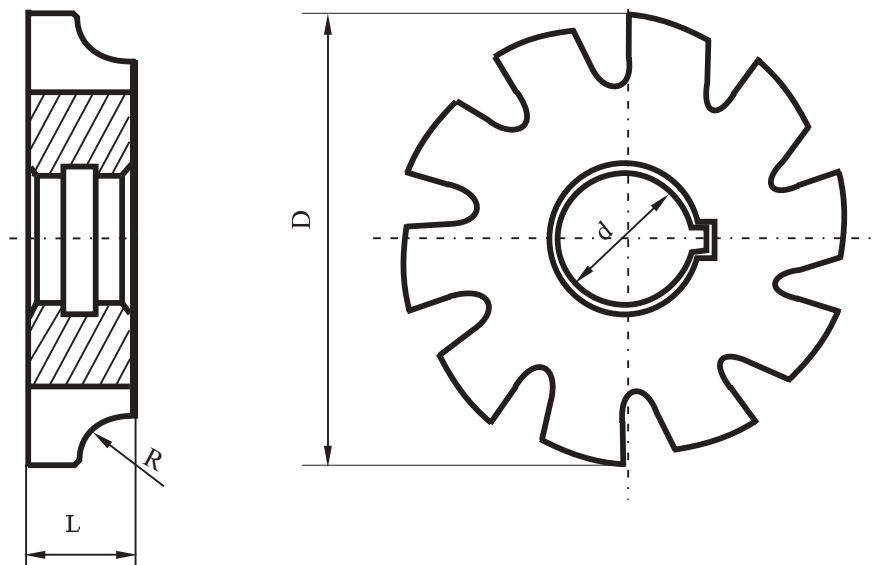


STAS 3542-80



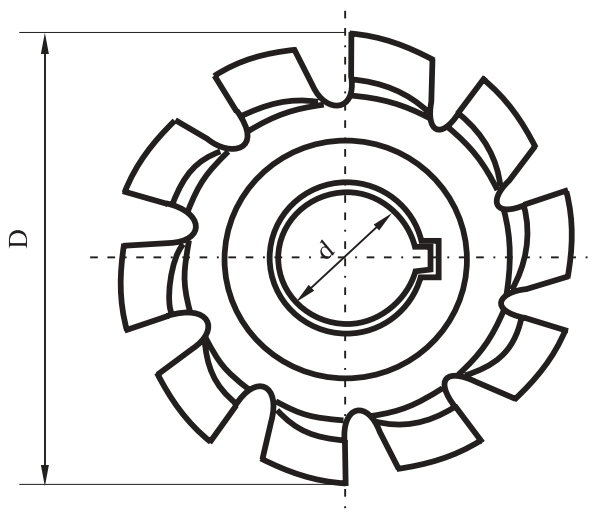
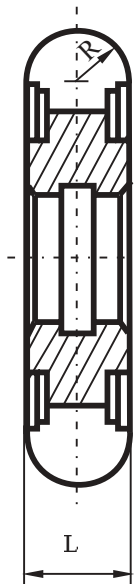
D mm	L mm	$\varphi^{\circ}$	$\delta^{\circ}$	d mm	Nr. de dinti z	Pret ( )
1	2	3	4	5	6	7
40	6	55; 60; 65	15	13	16	
40	8	70; 75	15	13	16	
40	10	80; 90	15; 20	13	16	
40	12	100	25	13	16	
50	8	55; 60	15	16	18	
50	10	65; 70; 75	15	16	18	
50	12	80	15	16	18	
50	16	90; 100	20; 25	16	18	
63	10	55; 60; 65	15	22	20	
63	12	70; 75	15	22	20	
63	16	80	15	22	20	
63	20	90; 100	20; 25	22	20	
80	12	50; 55; 60	15	22	22	
80	16	65; 70	15	22	22	
80	20	75; 80	15	22	22	
80	25	90	20	22	22	
100	25	65; 70	15	27	24	
100	32	75; 80	15	27	24	

STAS 3545-80



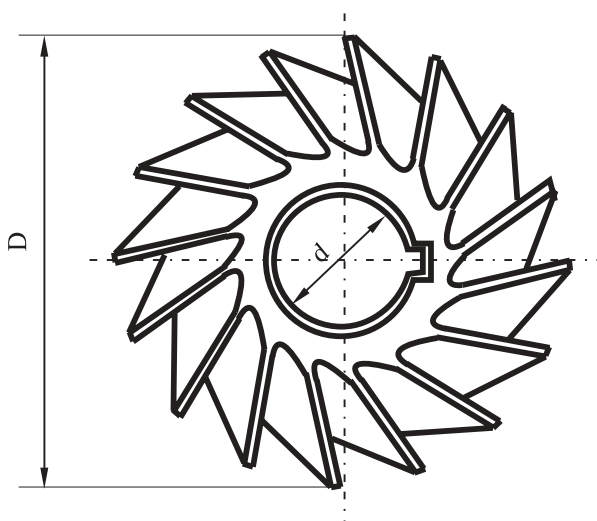
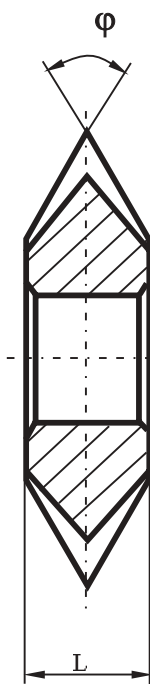
R mm	D mm	L mm	d mm	Nr. de dinti z	Pret ( )
1	2	3	4	5	6
1	50	4	16	14	
1.25	50	4	16	14	
1.6	50	5	16	14	
2	50	5	16	14	
2.5	63	5	22	12	
3	63	6	22	12	
4	63	8	22	12	
5	63	10	22	12	
6	80	12	27	10	
8	80	16	27	10	
10	100	18	32	10	
12	100	20	32	10	
16	125	24	32	10	
20	125	28	32	10	

STAS 3546-80



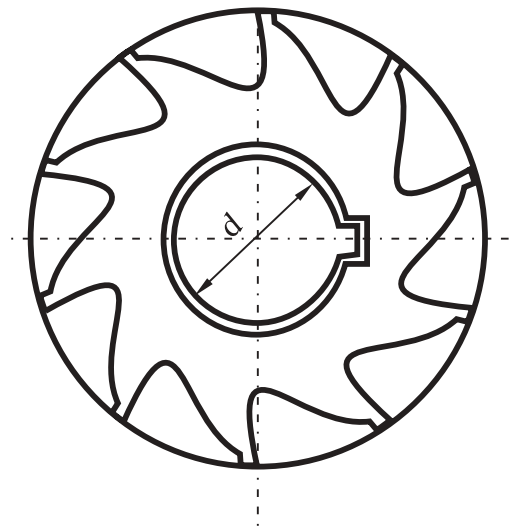
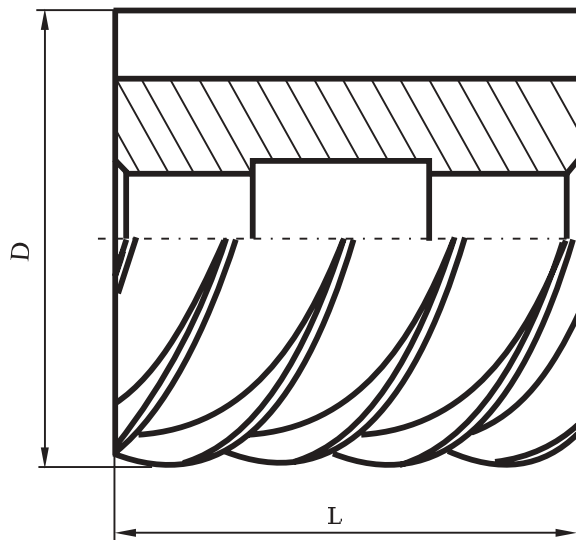
R mm	D mm	L mm	d mm	Nr. de dinti z	Pret ( )
1	2	3	4	5	6
1	50	2	16	14	
1.25	50	2.5	16	14	
1.6	50	3.2	16	14	
2	50	4	16	14	
2.5	63	5	22	12	
3	63	6	22	12	
4	63	8	22	12	
5	63	10	22	12	
6	80	12	27	12	
8	80	16	27	12	
10	100	20	32	10	
12	100	24	32	10	
16	125	32	32	10	
20	125	40	32	10	

STAS 5651-79



D mm	L mm	$\varphi^{\circ}$	d mm	Nr. de dinti z	Pret ( )
1	2	3	4	5	6
50	8	45	16	18	
50	10	60	16	18	
50	14	90	16	18	
63	10	45	22	20	
63	14	60	22	20	
63	20	90	22	20	
80	12	45	27	22	
80	18	60	27	22	
80	22	90	27	22	
100	18	45	32	24	
100	25	60	32	24	
100	32	90	32	24	

STAS 578-76



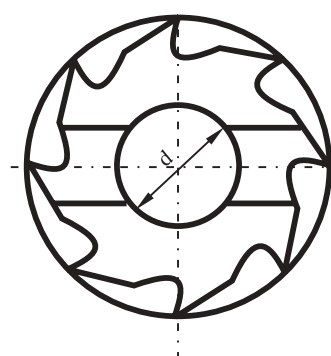
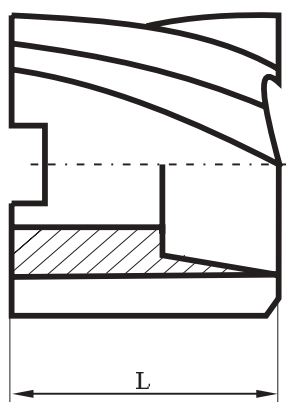
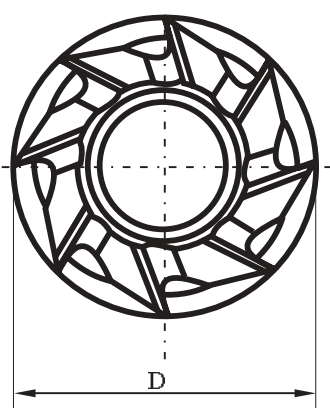
D mm	L mm	d mm	Tip N	Nr. de dinti z		Pret ( )
				Tip D	Tip M	
1	2	3	4	5	6	7
50	40	22	8	12	5	
50	63	22	8	12	5	
50	80	22	8	12	5	
63	50	27	8	14	6	
63	70	27	8	14	6	
80	63	32	10	16	6	
80	100	32	10	16	6	
100	70	40	10	18	8	
100	125	40	10	18	8	



## Freze cilindro-frontale

Shell end mills with plain bore and tenon drive

STAS 579-76

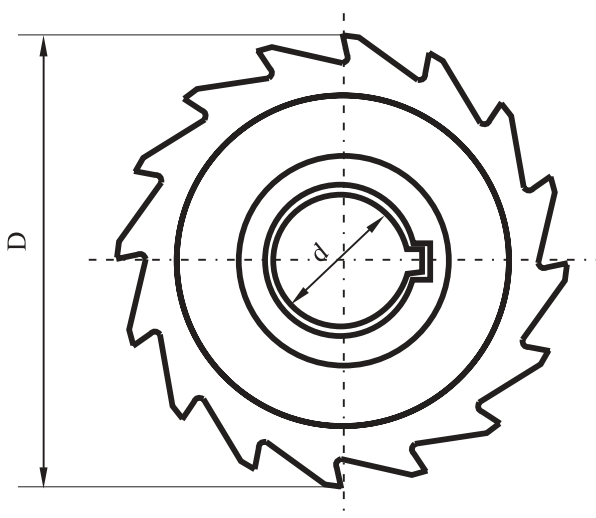
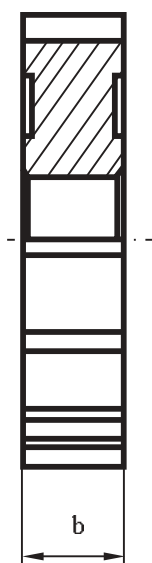


D mm	L mm	d mm	Tip N	Nr. de dinti z			Pret ( )
				Tip D	Tip M		
1	2	3	4	5	6	7	
40	32	16	6	10	4		
50	36	22	8	12	5		
63	40	27	8	14	6		
80	45	27	10	16	6		
100	50	32	10	18	8		
125	56	40	12	22	8		
160	63	50	14	24	10		



Freze disc pentru canale  
Slotting cutters with plain bore and key drive

STAS 580-75



D mm	L mm	d mm	Nr. de dinti z	Pret ( )
1	2	3	4	5
50	4; 5; 6; 8; 10;	16	14	
63	4; 5; 6; 8; 10; 12; 14;	22	16	
80	5; 6; 8; 10; 12; 14; 16; 18;	27	18	
100	6; 8; 10; 12; 14; 16; 18; 20; 22; 25;	32	20	
125	8; 10; 12; 14; 16; 18; 20; 22; 25;	32	24	
160	10; 12; 14; 16; 18; 20; 22; 25; 28; 32;	40	28	
200	12; 14; 16; 18; 20; 22; 25; 28; 32; 36; 40	40	30	